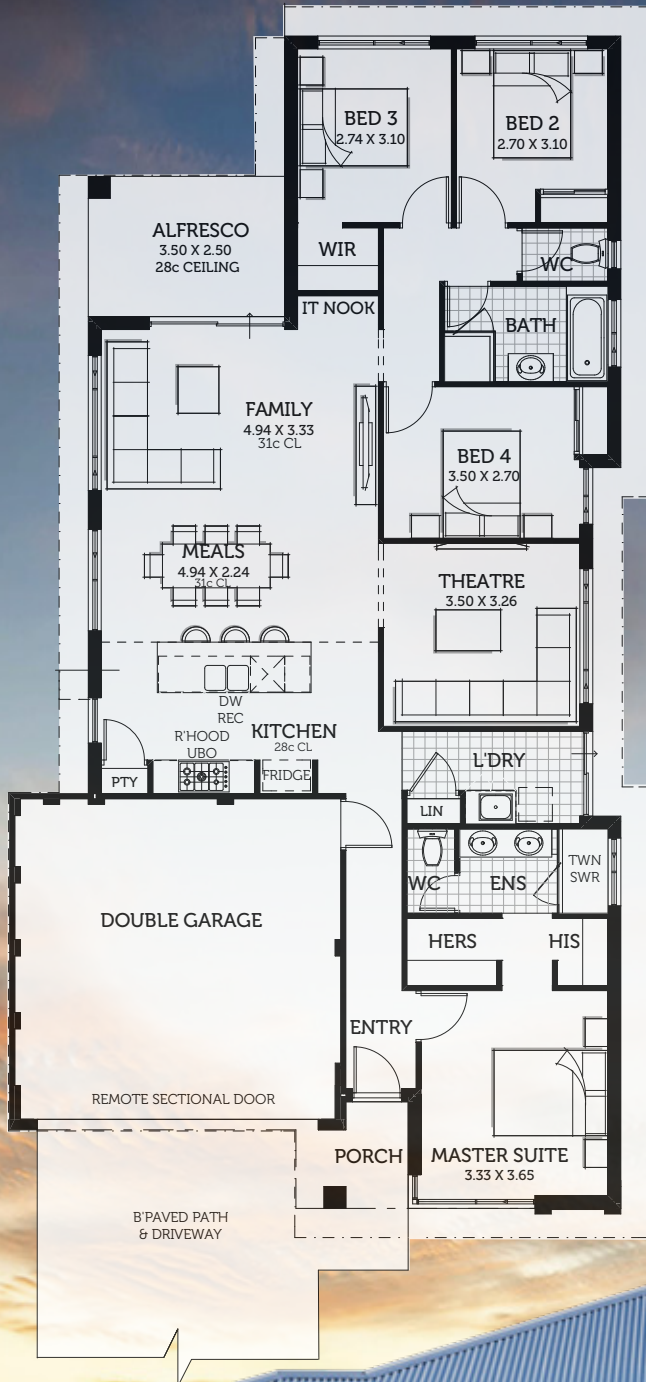


# THE OPTIMUS



**INDULGE** in an open-planned living and kitchen area that keeps the family connected at all times of the day and evening

**ENHANCE** the feeling of spaciousness with high living room ceilings. Boasting a height of 31C, this area adds modern style to the entire home

**DOUBLE** the luxury with a resort-style ensuite, thanks to his and hers double basin and double shower

**ELEVATE** your home to new heights with a choice between three designer elevations. Our team's Design Smarts are at your disposal

**FIND** freedom from the busyness of the home with a master suite that is artfully placed away from the other three bedrooms (and the noise that comes from them)

**AFFORD** a home with 'the lot' thanks to The Optimus and its list of extras. Think: theatre, walk-in robes, alfresco, and double garage

188.95m<sup>2</sup>  
TOTAL AREA

12m  
FRONTAGE

